

ASAHI KINZOKU Co.,Ltd

The pioneer of loading machine.

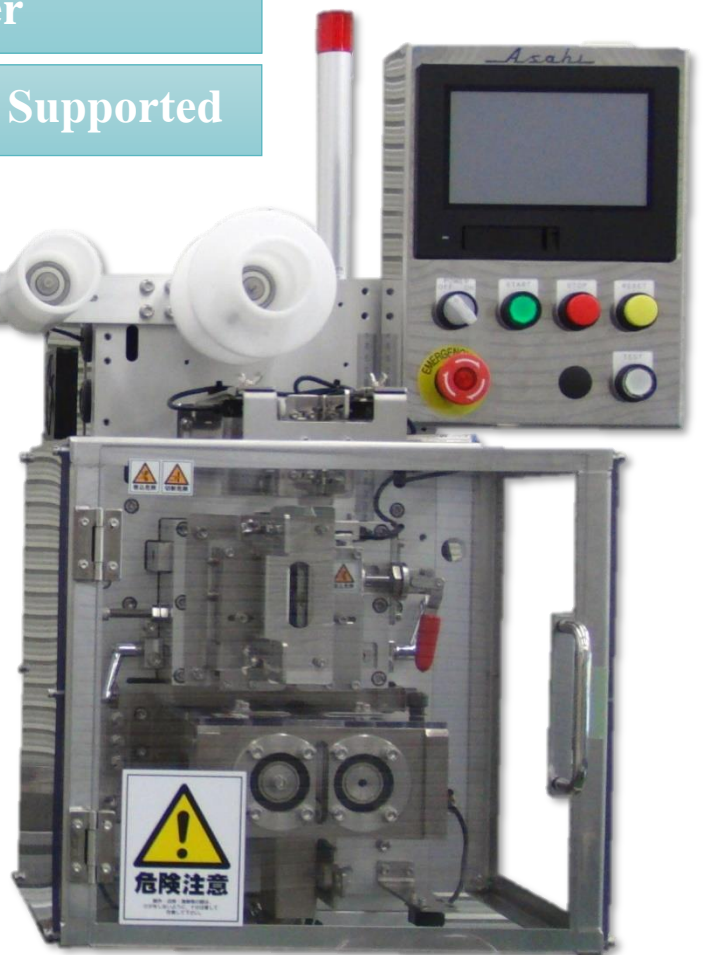
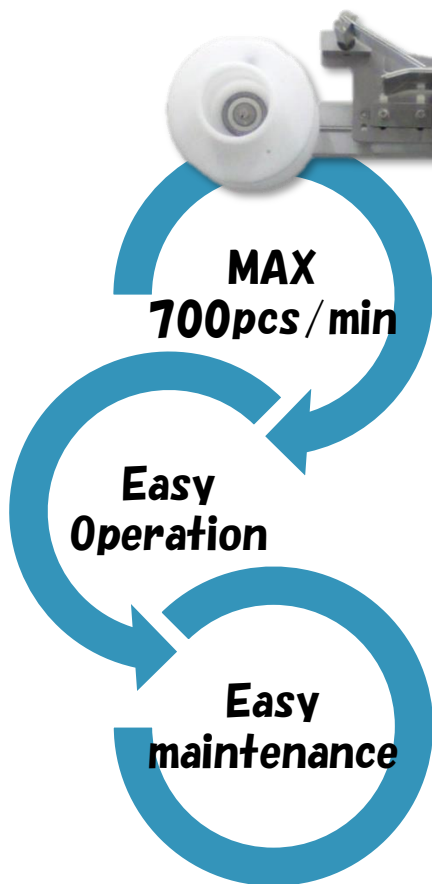
Ultra-High-Speed Automatic Pouch Distributor

MODEL NR-700

Accurate distribution at from low to high speed,
synchronized with packaging machine line.

Continuous Feed device
Ultra-High-Speed
Rotary cutter

Synchronized Control Supported



Can be used for the following items

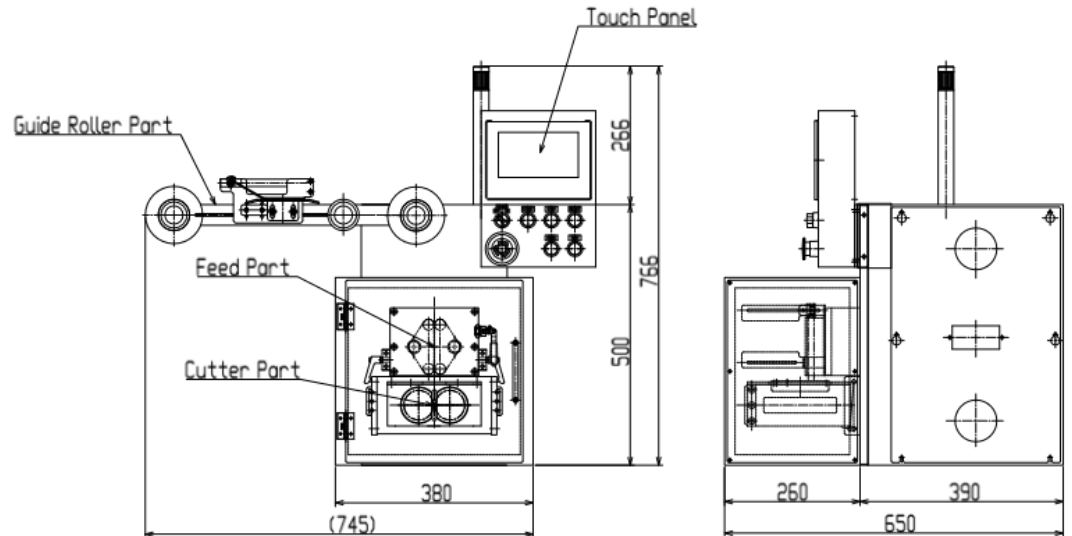
- Powder
- Liquid
- Soups
- Desiccant and more

Continuous pouches should be applied. Pouches that seal on three or four side can be used for this machine.

NR-700 FEATURES

- Our new continuous feed and cut system realize continuous operations at high speed with a maximum capacity of 700 pouches/minute. (This may change depending on the length of pouches and your specifications.)
- Easily synchronizes with the speed of the production line, from low to high speed, to distribute pouches into your desired position.
- The feed and rotary cutter mechanism are assembled as a unit for easy maintenance.
- Easy to switch between 50 saved pouch types using the simple touch panel.
- Only three buttons required for normal use (START, STOP and RESET).
- A variety of optional devices are available to match your specifications.

SCHEMATIC DIAGRAM



STANDARD SPECIFICATIONS

- Capacity: 700pcs/min
- Dimensions: (W) 380 mm × (H) 500 mm × (D) 650 mm
★The width includes the safe cover, and the height without the Synchro Belt.
- Machine Weight: 85kg
- Power Supply: AC200V 50Hz/60Hz 3phase
- Power Consumption: 2.8KVA
- Pouch Sizes: (W) 30~100 mm × (L) 30~150 mm × (T) MAX20 mm

OPTIONAL DEVICES ARE AVAILABLE

●A variety of Feed Devices ●Stand

- Please do not hesitate to contact ASAHI KINZOKU for expert advice about our new **High-Speed Automatic Pouch Distributor**.
- Specifications and appearance are subject to change without notice.



CAUTION

For Safe Use

- Read operation manual carefully before use to insure proper and correct operation
- Use the machine only with indicated electric current and voltage
- Be sure to ground the machine to prevent electrocution or short circuit.

Sales & Manufacturing Headquarters



505 Simomaruya-cho, Nishi-iru, Chiekoin-dori,
Shimodachiuri-dori, Kamigyo-ku, Kyoto city
602-8176 JAPAN
Tel +81-75-801-0154 Fax +81-75-842-1351
URL <http://www.akg.jp/kinzoku/>
E-mail asahi@akg.jp

Tokyo Sales Office

10-2 Miyamoto-cho, Ageo city, Saitama Prefecture
362-0036 JAPAN
Tel +81-48-771-0662 Fax +81-48-773-5937

Kyushu Sales Office

No. 206 Ichikura Building, 1-26, 2-chome, Hakata
station south, Hakata-ku, Fukuoka city 812-0016,
JAPAN
Tel +81-92-471-5234 Fax +81-92-473-7150

■ Reference